

# Thermal Therapy Improves Left Ventricular Diastolic Function in Patients With Congestive Heart Failure: A Tissue Doppler Echocardiographic Study

Akira KISANUKI, MD, FJCC  
Satoshi DAITOKU, RT<sup>\*1</sup>  
Takashi KIHARA, MD<sup>\*1</sup>  
Yutaka OTSUJI, MD, FJCC<sup>\*2</sup>  
Chuwa TEI, MD, FJCC<sup>\*1</sup>

## Abstract

**Objectives.** We previously reported that systemic thermal therapy using 60 °C dry sauna improves left ventricular systolic function and clinical symptoms in patients with chronic heart failure. The aim of this study was to investigate the effects of thermal therapy on left ventricular diastolic function.

**Methods.** We examined transmitral inflow and mitral annular velocity before and after sauna in 10 patients with congestive heart failure using pulsed and tissue Doppler echocardiography.

**Results.** Left ventricular and left atrial dimensions and left ventricular percentage fractional shortening did not change after sauna. Early diastolic mitral inflow velocity (E) increased and the deceleration time of the E wave decreased significantly after sauna compared to before sauna. Early diastolic mitral annular velocity (E') significantly increased after sauna. The deceleration time of E' significantly decreased after sauna compared to before sauna. The E/E' significantly decreased 30 min after sauna.

**Conclusions.** Thermal therapy improves acute left ventricular diastolic function in patients with congestive heart failure.

J Cardiol 2007 Apr; 49(4): 187 - 191

## Key Words

Cardiovascular disease  
Heart failure

Diastole

Echocardiography, transthoracic

## INTRODUCTION

Recently, a large number of studies have suggested that left ventricular (LV) diastolic dysfunction occurs in a high percentage of heart failure patients.<sup>1)</sup> Therefore, not only LV systolic function but also diastolic function is considered part of the mechanism underlying heart failure.<sup>2,3)</sup> Systemic thermal therapy, such as taking a bath or sauna,

induces systemic vasodilation resulting in the reduction of cardiac pre and after-load in patients with chronic heart failure.<sup>4)</sup> Cardiac and stroke indices and systemic vascular resistance, an invasive index, are improved after thermal therapy.<sup>4)</sup> The Tei index,<sup>5,6)</sup> a noninvasive index that combines systolic and diastolic myocardial function, is also improved after thermal therapy.<sup>7)</sup> However, there have been few studies on the effects of ther-

鹿児島大学医学部 保健学科: 〒890 - 8506 鹿児島県鹿児島市桜ヶ丘 8 - 35 - 1; \*<sup>1</sup>鹿児島大学大学院医歯学総合研究科 循環器・呼吸器・代謝内科学; \*<sup>2</sup>(現 産業医科大学 第二内科, 北九州)

School of Health Sciences, Faculty of Medicine, Kagoshima University, Kagoshima; \*<sup>1</sup>Department of Cardiovascular, Respiratory and Metabolic Medicine, Graduate School of Medicine, Kagoshima University, Kagoshima; \*<sup>2</sup>(present)The Second Department of Internal Medicine, University of Occupation and Environmental Health, Japan, Kitakyushu

**Address for correspondence:** KISANUKI A, MD, FJCC, School of Health Sciences, Faculty of Medicine, Kagoshima University, Sakuragaoka 8 - 35 - 1, Kagoshima, Kagoshima 890 - 8506; E-mail: akira-k@health.nop.kagoshima-u.ac.jp

Manuscript received December 15, 2006; revised February 6, 2007; accepted February 6, 2007

RT = registered technician

mal therapy on LV diastolic function.

LV diastolic function has been widely assessed using mitral inflow velocity.<sup>8)</sup> However, mitral flow depends on multiple interrelated factors, including heart rate and the extent of ventricular relaxation, atrial and ventricular compliances, and left atrial pressure.<sup>9)</sup> Tissue Doppler imaging of mitral annular motion has been proposed to correct for the influence of myocardial relaxation on transmitral flow, and is an excellent predictor of LV relaxation and diastolic filling in subsets of patients.<sup>9-16)</sup> Therefore, combining tissue Doppler imaging and pulsed Doppler echocardiography may accurately assess the changes in LV diastolic function after thermal therapy.

## SUBJECTS AND METHODS

The study group consisted of 10 patients, 9 men and 1 woman (mean age  $62 \pm 16$  years) with congestive heart failure who underwent repeated sauna treatment and standard medical therapy. Five patients had dilated cardiomyopathy, 3 had prior myocardial infarction without myocardial ischemia by stress testing, 1 had myocarditis and 1 had aortic regurgitation. New York Heart Association (NYHA) functional classes were in 2 patients and in 8 patients. The mean values of B-type natriuretic peptide were  $410 \pm 708$  pg/ml (range 37 - 2,000) on admission. All patients were in sinus rhythm. All patients gave informed consent to the study and the protocol was approved by the Ethical Committee of Kagoshima University Hospital.

### Sauna treatment

Thermal therapy with a far infrared-ray dry sauna was performed to exclude the effect of hydrostatic pressure.<sup>4,17-20)</sup> Medical therapy was not discontinued before sauna treatment. Patients were placed in a supine position on a bed in a 60 °C sauna for 15 min, and after removal, continued bed rest with a blanket to keep them warm for an additional 30 min. Patients were weighed before and after the sauna treatment. Oral hydration with water was used to compensate for lost weight. Blood pressure, heart rate, body temperature and transthoracic echocardiographic examinations were performed before and 30 min after sauna treatment.

### Echocardiography

With patients in the left lateral decubitus position, standard M-mode, two-dimensional echocar-

diography, and pulsed and tissue Doppler echocardiography were performed using a Toshiba Aplio 80 ultrasound system. Mitral inflow and LV outflow velocity patterns were recorded by placing a sample volume between the tips of the mitral leaflets and at the LV outflow tract in apical views. Mitral annular tissue Doppler examinations were performed by placing a sample volume lateral to the mitral annulus on apical 4-chamber view.<sup>11,12)</sup> LV end-diastolic and end-systolic dimensions, LV percentage fractional shortening and left atrial dimension were obtained.

LV stroke volume was obtained as the product of LV outflow cross-sectional area and velocity time integral. Cardiac output was derived from stroke volume multiplied by heart rate. Doppler time interval "a" from cessation to the onset of mitral inflow and interval "b" from the onset to the cessation of LV outflow velocity were obtained. The Tei index, defined as the sum of isovolumic contraction and relaxation times divided by the ejection time, was calculated as:  $(a - b)/b$ .<sup>7)</sup> Early (E) and late (A) diastolic mitral flow velocities and deceleration time of the E wave were measured using the standard methods.<sup>8)</sup> Systolic, early (E') and late diastolic mitral annular velocities and deceleration time of the E' wave were obtained.<sup>11)</sup> Systolic annular waves were identified as beginning approximately 100 msec after the onset of the electrocardiographic QRS complex.<sup>21)</sup> The mitral E/A and E/E' ratios were subsequently derived. All data were obtained from 6 consecutive cardiac cycles and averaged.

### Statistical analysis

Values are expressed as mean  $\pm$  SD. The paired *t*-test was used to examine the significance of continuous values between the two groups. Differences were considered significant at  $p < 0.05$ .

## RESULTS

None of the sauna-treated patients experienced dyspnea, angina pectoris or palpitations. Body weight decreased slightly, but significantly, 30 min after sauna compared to before sauna. Body temperature rose significantly after sauna compared to before sauna. Heart rate and systolic blood pressure did not change significantly before and after sauna. Diastolic blood pressure decreased significantly 30 min after sauna compared to before sauna (Table 1)

LV diastolic and systolic dimensions, percentage

**Table 1 Results of measurements before and 30 min after sauna**

Indices	Before sauna	30 min after sauna
Body weight( kg )	57.0 ± 15.2	56.7 ± 15.0*
Temperature( )	36.1 ± 0.4	36.9 ± 0.4**
Heart rate( beats/min )	66 ± 17	67 ± 20
Systolic blood pressure( mmHg )	120 ± 28	123 ± 39
Diastolic blood pressure( mmHg )	63 ± 10	56 ± 14*

Values are mean ± SD. \**p* < 0.05, \*\**p* < 0.01 vs before sauna.

**Table 2 Changes in M-mode and pulsed Doppler echocardiography data**

Indices	Before sauna	30 min after sauna
LVDd( mm )	52 ± 13	53 ± 9
LVDs( mm )	45 ± 13	45 ± 11
%FS( % )	13 ± 6	16 ± 10
LAD( mm )	38 ± 7	39 ± 7
SV( ml )	53 ± 7	58 ± 9
CO( l/min )	3.5 ± 1.5	3.6 ± 1.3
a( msec )	406 ± 43	368 ± 38**
b( msec )	268 ± 38	262 ± 35
Tei index	0.53 ± 0.15	0.42 ± 0.14**

Values are mean ± SD. \*\**p* < 0.01 vs before sauna.

LVDd = left ventricular end-diastolic dimension; LVDs = left ventricular end-systolic dimension; %FS = percentage fractional shortening; LAD = left atrial dimension; SV = stroke volume; CO = cardiac output.

fractional shortening, left atrial dimension, stroke volume and cardiac output did not change significantly after sauna ( **Table 2** ) Time interval “ a ” decreased significantly 30 min after sauna compared to before sauna. Time interval “ b ” did not change significantly after sauna. Thus, the LV Tei index decreased significantly 30 min after sauna compared to before sauna.

E velocity increased significantly 30 min after sauna compared to before sauna. Deceleration time of the E decreased significantly 30 min after sauna compared to before sauna. A velocity and E/A ratio did not change significantly after sauna( **Table 3** )

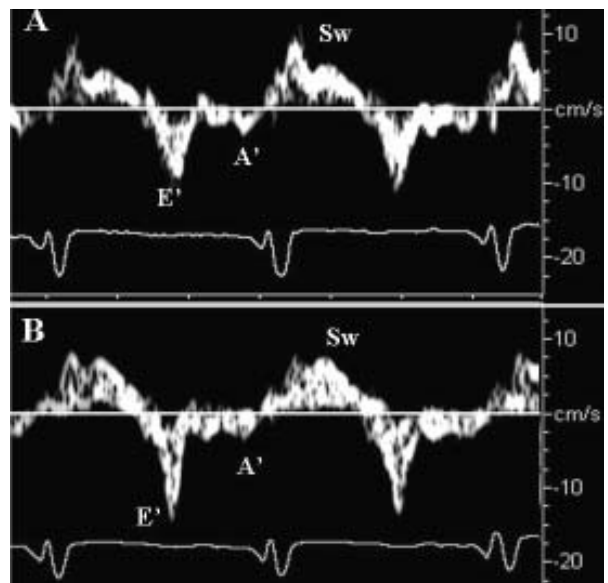
E ’ annular velocities increased significantly 30 min after sauna compared to before sauna. The deceleration time of the E ’ decreased significantly 30 min after sauna compared to before sauna( **Fig. 1** ) Late diastolic annular velocities did not change significantly before and after sauna. The E/E ’ ratio

**Table 3 Changes in mitral inflow velocity and mitral annular velocity data**

Indices	Before sauna	30 min after sauna
E( cm/sec )	71 ± 31	81 ± 35***
E DcT( msec )	329 ± 97	266 ± 76***
A( cm/sec )	80 ± 16	85 ± 28
E/A	0.91 ± 0.50	1.1 ± 0.93
E ’( cm/sec )	9.4 ± 2.6	10.7 ± 3.1**
E ’ DcT( msec )	70 ± 15	50 ± 8**
A ’( cm/sec )	8.9 ± 3.0	9.7 ± 3.3
E/E ’	8.1 ± 3.9	7.7 ± 3.6*
Sw( cm/sec )	6.3 ± 0.8	6.5 ± 0.9

Values are mean ± SD. \**p* < 0.05, \*\**p* < 0.01, \*\*\**p* < 0.001 vs before sauna.

E = early diastolic mitral inflow velocity; DcT = deceleration time; A = atrial systolic mitral inflow velocity; E ’ = early diastolic mitral annular velocity; A ’ = atrial systolic mitral annular velocity; Sw = systolic annular velocity.



**Fig. 1 Tissue Doppler imaging of the mitral annulus before( A ) and 30 min after sauna( B ) in a 40-year-old patient with prior myocardial infarction**

Early diastolic annular velocity( E ’ ) increased from 10 cm/sec to 14 cm/sec and the deceleration slope of E ’ became steeper in panel B compared to that in panel A. A ’ = atrial systolic velocity; E ’ = early diastolic velocity; Sw = systolic wave velocity.

decreased significantly 30 min after sauna compared to before sauna. Systolic annular velocity did not change significantly before and after sauna (Table 3)

## DISCUSSION

In this study, heart rate and systolic blood pressure did not change significantly after sauna. E' annular velocity increased significantly 30 min after sauna compared to before sauna. Deceleration time of the E' also decreased significantly 30 min after sauna compared to before sauna. There is a strong correlation between E' and the time constant of LV relaxation ( $\tau$ ) and the first derivatives of LV pressure in diastole ( $-dP/dt$ ).<sup>13)</sup> E' has been considered as a reliable marker of the preload-independent index of LV relaxation. Deceleration time of E' may be an index of LV relaxation, because the deceleration time of E' was significantly prolonged in patients with diastolic dysfunction.<sup>11)</sup> Therefore, our data strongly suggest that LV relaxation was improved after sauna compared to before sauna, probably due to the acute effects of thermal vasodilation.

E/E' has been accepted as a reliable estimate of LV filling pressures. E/E' shows strong correlations with pulmonary capillary wedge pressure<sup>11,12,14)</sup> or LV mean<sup>9)</sup> or end diastolic pressure<sup>15,16)</sup> in patients with sinus tachycardia,<sup>12)</sup> systolic and diastolic heart failure<sup>16)</sup> and mitral regurgitation.<sup>15)</sup> E/E' > 15 reliably predicts elevated LV filling pressure > 15 mmHg in patients with angina,<sup>9)</sup> congestive heart failure<sup>14)</sup> and other heart diseases,<sup>15)</sup> while E/E' < 8 accurately predicted normal mean LV pressure in such patients.<sup>9)</sup> In our data, E/E' was

$8.1 \pm 3.9$  before sauna, suggesting that LV filling pressure was not elevated in our patients before sauna. E/E' decreased significantly 30 min after sauna compared to before sauna, suggesting that LV filling pressure decreased significantly 30 min after sauna.

Mitral flow peak velocity before sauna was  $71 \pm 31$  msec in the E wave,  $80 \pm 16$  msec in the A wave and deceleration time was  $329 \pm 97$  msec, suggesting an abnormal LV relaxation pattern. E velocity increased and deceleration time decreased significantly 30 min after sauna compared to before sauna. These findings suggest that mitral flow velocity pattern changed from an abnormal relaxation pattern toward a more normal relaxation pattern, because tissue Doppler data showed that LV diastolic function was improved by sauna.<sup>8)</sup>

Systolic indices such as percentage fractional shortening, stroke volume, cardiac output and tissue Doppler systolic annular velocity<sup>21,22)</sup> did not change significantly before and after sauna. The Tei index improved significantly 30 min after sauna compared to before sauna as previously reported.<sup>7)</sup>

## Limitations

The number of subjects examined was small. We did not observe how long the improvement in LV diastolic function persisted. Further studies are needed to clarify the chronic effects of repeated thermal therapy on LV diastolic function in a large series of patients with congestive heart failure.

## CONCLUSIONS

Thermal therapy improves acute LV diastolic function in patients with congestive heart failure.

## 要 約

### 温熱療法は心不全例の左室拡張能を改善させる: 組織ドップラー法による検討

木佐 貴 彰 大徳 尚司 木原 貴士 尾辻 豊 鄭 忠和

目的: 我々は60歳の乾式サウナを用いた全身の温熱療法が慢性心不全患者の左室収縮能や臨床症状を改善することを報告してきた。本研究の目的は温熱療法の左室拡張能に及ぼす影響を研究することである。

方法: 心不全患者10例を対象にして、通常の断層心エコー図法とパルスドップラー法、組織ドップラー法による左室流入血流速度波形と僧帽弁輪運動速度波形を温熱療法前と30分後に記録した。

結果: 左室内径、左房径、左室短縮率はサウナ療法の前後で有意に変化しなかった。拡張早期の左室流入血流速度(E)はサウナ療法後に有意に増大し、その減速時間は有意に短縮した。拡張早期の僧帽弁輪運動速度(E')はサウナ後に有意に増大し、その減速時間は有意に短縮した。両者の比であるE/E'はサウナ後に有意に減少した。

結 論: 温熱療法は心不全患者の左室拡張能を改善させることが示唆された。

*J Cardiol* 2007 Apr; 49(4): 187 - 191

## References

- 1) Zile MR, Baicu CF, Gaasch WH: Diastolic heart failure: Abnormalities in active relaxation and passive stiffness of the left ventricle. *N Engl J Med* 2004; **350**: 1953 - 1959
- 2) Zile MR, Brutsaert DL: New concepts in diastolic dysfunction and diastolic heart failure: Part II: Causal mechanisms and treatment. *Circulation* 2002; **105**: 1503 - 1508
- 3) Redfield MM: Understanding "diastolic" heart failure. *N Engl J Med* 2004; **350**: 1930 - 1931
- 4) Tei C, Horikiri Y, Park JC, Jeong JW, Chang KS, Toyama Y, Tanaka N: Acute hemodynamic improvement by thermal vasodilation in congestive heart failure. *Circulation* 1995; **91**: 2582 - 2590
- 5) Tei C: New non-invasive index for combined systolic and diastolic ventricular function. *J Cardiol* 1995; **26**: 135 - 136
- 6) Tei C, Ling LH, Hodge DO, Bailey KR, Oh JK, Rodeheffer RJ, Tajik AJ, Seward JB: New index of combined systolic and diastolic myocardial performance: A simple and reproducible measure of cardiac function - a study in normals and dilated cardiomyopathy. *J Cardiol* 1995; **26**: 357 - 366
- 7) Tei C: Thermal therapy for congestive heart failure: Estimation by TEI index. *J Cardiol* 2001; **37**(Suppl 1): 155 - 159
- 8) Nishimura RA, Tajik AJ: Evaluation of diastolic filling of left ventricle in health and disease: Doppler echocardiography is the clinician's Rosetta Stone. *J Am Coll Cardiol* 1997; **30**: 8 - 18
- 9) Ommen SR, Nishimura RA, Appleton CP, Miller FA, Oh JK, Redfield MM, Tajik AJ: Clinical utility of Doppler echocardiography and tissue Doppler imaging in the estimation of left ventricular filling pressures: A comparative simultaneous Doppler-catheterization study. *Circulation* 2000; **102**: 1788 - 1794
- 10) Sohn DW, Chai IH, Lee DJ, Kim HC, Kim HS, Oh BH, Lee MM, Park YB, Choi YS, Seo JD, Lee YW: Assessment of mitral annulus velocity by Doppler tissue imaging in the evaluation of left ventricular diastolic function. *J Am Coll Cardiol* 1997; **30**: 474 - 480
- 11) Nagueh SF, Middleton KJ, Kopelen HA, Zoghbi WA, Quinones MA: Doppler tissue imaging: A noninvasive technique for evaluation of left ventricular relaxation and estimation of filling pressures. *J Am Coll Cardiol* 1997; **30**: 1527 - 1533
- 12) Nagueh SF, Mitani I, Kopelen HA, Middleton KJ, Quinones MA, Zoghbi WA: Doppler estimation of left ventricular filling pressure in sinus tachycardia: A new application of tissue Doppler imaging. *Circulation* 1998; **98**: 1644 - 1650
- 13) Nagueh SF, Sun H, Kopelen HA, Middleton KJ, Khoury DS: Hemodynamic determinants of the mitral annulus diastolic velocities by tissue Doppler. *J Am Coll Cardiol* 2001; **37**: 278 - 285
- 14) Dokainish H, Zoghbi WA, Lakkis NM, Al-Bakshy F, Dhir M, Quinones MA, Nagueh SF: Optimal noninvasive assessment of left ventricular filling pressures: A comparison of tissue Doppler echocardiography and B-type natriuretic peptide in patients with pulmonary artery catheters. *Circulation* 2004; **109**: 2432 - 2439
- 15) Bruch C, Stypmann J, Gradaus R, Breithardt G, Wichter T: Usefulness of tissue Doppler imaging for estimation of filling pressures in patients with primary or secondary pure mitral regurgitation. *Am J Cardiol* 2004; **93**: 324 - 328
- 16) Bruch C, Grude M, Müller J, Breithardt G, Wichter T: Usefulness of tissue Doppler imaging for estimation of left ventricular filling pressures in patients with systolic and diastolic heart failure. *Am J Cardiol* 2005; **95**: 892 - 895
- 17) Imamura M, Biro S, Kihara T, Yoshifuku S, Takasaki K, Otsuji Y, Minagoe S, Toyama Y, Tei C: Repeated thermal therapy improves impaired vascular endothelial function in patients with coronary risk factors. *J Am Coll Cardiol* 2001; **38**: 1083 - 1088
- 18) Kihara T, Biro S, Imamura M, Yoshifuku S, Takasaki K, Ikeda Y, Otsuji Y, Minagoe S, Toyama Y, Tei C: Repeated sauna treatment improves vascular endothelial and cardiac function in patients with chronic heart failure. *J Am Coll Cardiol* 2002; **39**: 754 - 759
- 19) Kihara T, Biro S, Ikeda Y, Fukudome T, Shinsato T, Masuda A, Miyata M, Hamasaki S, Otsuji Y, Minagoe S, Akiba S, Tei C: Effects of repeated sauna treatment on ventricular arrhythmias in patients with chronic heart failure. *Circ J* 2004; **68**: 1146 - 1151
- 20) Biro S, Masuda A, Kihara T, Tei C: Clinical implications of thermal therapy in lifestyle-related diseases. *Exp Biol Med* (Maywood) 2003; **228**: 1245 - 1249
- 21) Gulati VK, Katz WE, Follansbee WP, Gorcsan J: Mitral annular descent velocity by tissue Doppler echocardiography as an index of global left ventricular function. *Am J Cardiol* 1996; **77**: 979 - 984
- 22) Yip G, Wang M, Zhang Y, Fung JWH, Ho PY, Sanderson JE: Left ventricular long axis function in diastolic heart failure is reduced in both diastole and systole: Time for a redefinition? *Heart* 2002; **87**: 121 - 125