

Cardiovascular Imaging In-a-Month

Left Main Trunk Coronary Stenosis in an Angina Patient With Low Coronary Risk Factors Assessed by Multi-Detector Row Computed Tomography

Ryoko MITSUTAKE, MD

Shin-ichiro MIURA, MD, FJCC

Hiroaki NISHIKAWA, MD

Keijiro SAKU, MD, FJCC

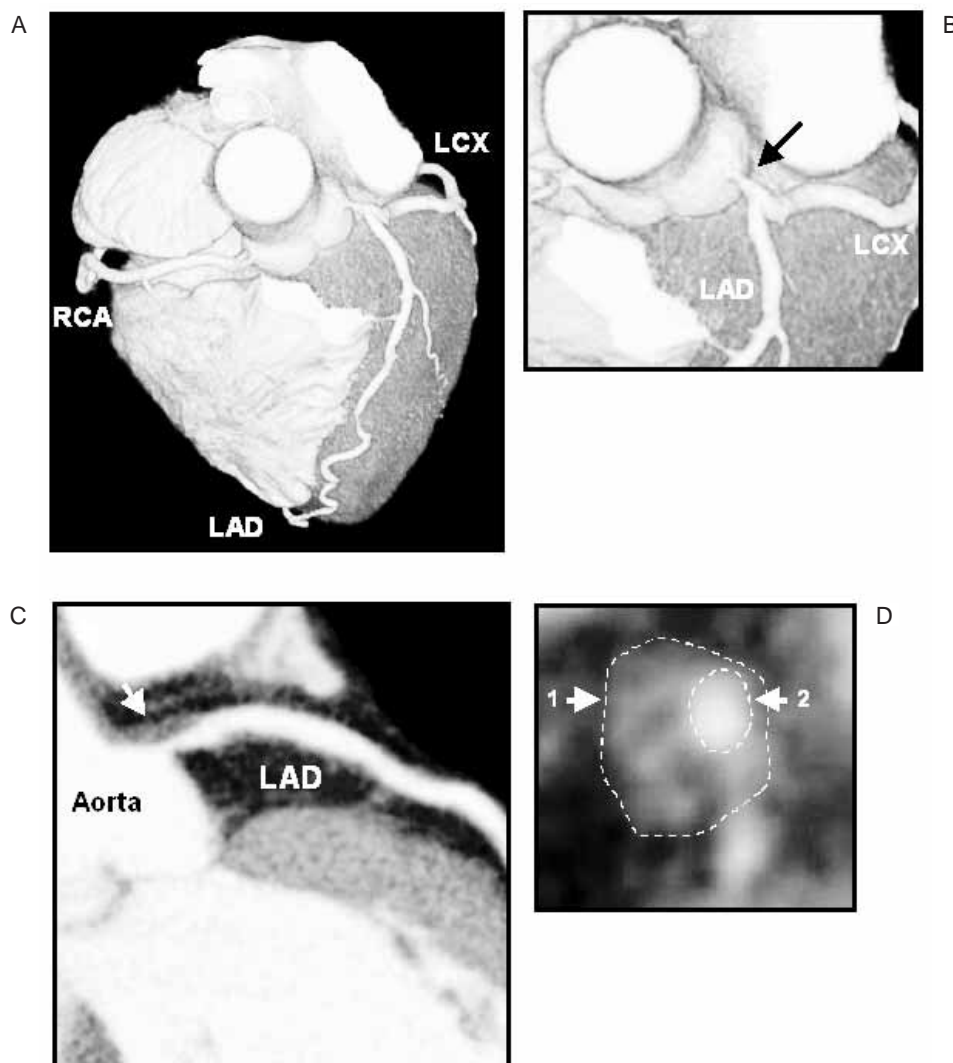


Fig. 1

福岡大学医学部 心臓血管内科(光武良晃, 三浦伸一郎, 西川宏明, 朔 啓二郎): 〒814-0180 福岡市城南區七隈 7-45-1
Department of Cardiology, Fukuoka University School of Medicine, Fukuoka

Address for correspondence: MIURA S, MD, FJCC, Department of Cardiology, Fukuoka University School of Medicine, Nanakuma
7-45-1, Jonan-ku, Fukuoka 814-0180; E-mail: miuras@cis.fukuoka-u.ac.jp

Manuscript received April 16, 2007; accepted May 9, 2007

CASE

A 51-year-old woman with smoking as the only coronary risk factor was referred to our hospital after complaining of increasing chest pain on mild exertion and even at rest. Electrocardiography at rest showed ST depression of 0.1 to 0.2 mV in leads I, II, aVF, and V₄ to V₆. Symptoms were relieved by nitrate administration. Next, 64 multi-detector row computed tomography (MDCT) (Aquilion 64, TOSHIBA) was performed for diagnosis (Fig. 1).

Point of Diagnosis

MDCT has rapidly become available in many hospitals, and permits non-invasive visualization of the coronary lumen, coronary atherosclerotic plaque, and coronary stenosis,¹⁾ as well as the quantification of coronary artery calcification.²⁾

In this case, we detected severe stenosis of the left main trunk coronary artery and coronary atherosclerotic plaque. The mean density of the plaque by MDCT was analyzed on a workstation (ZIO M900 Quadra). Plaque can be categorized into 3 levels based on its mean density.³⁾ The mean CT numbers for soft, intermediate, and calcified plaque are 14 ± 26 , 91 ± 21 , 419 ± 194 HU, respectively. In this case, MDCT coronary angiography showed that the mean density of the plaque was 35.9 HU, which was classified as acute coronary syndrome-prone soft plaque. Therefore, the plaque was considered likely to cause sudden occlusion of the left main trunk coronary artery, leading to sudden death. This could occur when the plaque ruptures or as a complication at catheter cannulation in the left coronary artery. MDCT findings regarding the presence of soft plaque from the ostium before invasive coronary angiography can contribute to a careful catheter procedure to avoid fatal cardiac complications. Therefore, we performed invasive coronary angiography and very carefully introduced a 5 Fr Judkins-type catheter (JL-3.5, Terumo) into the left coronary artery. Invasive coronary angiography also showed severe stenosis of the left main trunk coronary artery (Fig. 2). Therefore, the patient urgently underwent two-vessel coronary artery bypass grafting without complications. The symptoms improved after the operation, and patency of the bypass graft was confirmed angiographically.

Recent studies have demonstrated approximately 95 % sensitivity and specificity of MDCT angiography for the identification of significant coronary

stenosis in comparison with invasive coronary angiography.⁴⁾ Thus, findings by MDCT could be useful for considering a safer strategy before performing invasive coronary angiography.

The present case of diagnosis of severe left main trunk stenosis in a patient with low coronary risk factors by MDCT coronary angiography shows the potential for the non-invasive identification of disease of the coronary arteries, especially ostial lesions. Further development of MDCT with regard to spatial resolution could enable coronary artery bypass grafting without the need for invasive coronary angiography in the future.

Diagnosis: Left main trunk coronary artery stenosis

Key Words: Angina pectoris; Angiography; Risk factors; Plaque; Computed tomography

References

- 1) Achenbach S, Ulzheimer S, Baum U, Kachelriess M, Ropers D, Giesler T, Bautz W, Daniel WG, Kalender WA, Moshage W: Noninvasive coronary angiography by retrospectively ECG-gated multislice spiral CT. *Circulation* 2000; **102**: 2823 - 2828
- 2) Mitsutake R, Niimura H, Miura S, Zhang B, Iwata A, Nishikawa H, Kawamura A, Kumagai K, Shirai K, Matsunaga A, Saku K: Clinical significance of the coronary calcification score by multidetector row computed tomography for the evaluation of coronary stenosis in Japanese patients. *Circ J* 2006; **70**: 1122 - 1127
- 3) Schroeder S, Kopp AF, Baumbach A, Meisner C, Kuettner A, Georg C, Ohnesorge B, Herdeg C, Claussen CD, Karsch KR: Noninvasive detection and evaluation of atherosclerotic coronary plaques with multislice computed tomography. *J Am Coll Cardiol* 2001; **37**: 1430 - 1435
- 4) Leber AW, Knez A, von Ziegler F, Becker A, Nikolaou K, Paul S, Wintersperger B, Reiser M, Becker CR, Steinbeck G, Boekstegers P: Quantification of obstructive and nonobstructive coronary lesions by 64-slice computed tomography: A comparative study with quantitative coronary angiography and intravascular ultrasound. *J Am Coll Cardiol* 2005; **46**: 147 - 154

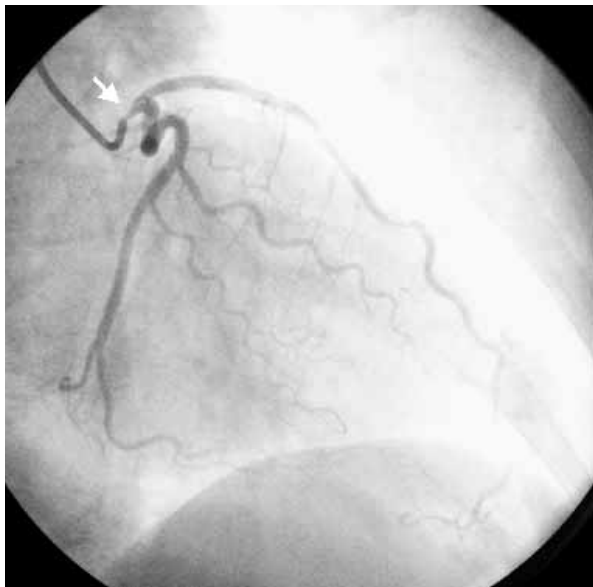


Fig. 2

Fig. 1 64-multi-detector row computed tomography coronary angiograms

A and B: Volume rendering images showed severe left main trunk coronary stenosis.

C: Multi-planar reconstruction image demonstrated plaque.

D: Cross-sectional image identified plaque (*arrow 1*) and luminal narrowing of the left main trunk coronary artery (*arrow 2*). The mean computed tomography number of the plaque was 35.9 HU, which was classified as soft plaque.

RCA = right coronary artery; LAD = left anterior descending artery; LCX = left circumflex artery.

Fig. 2 Invasive coronary angiogram showing 90% luminal narrowing (*arrow*) of the left main trunk coronary artery